

Portable Data Loggers with USB Interface

OM-EL-USB Series



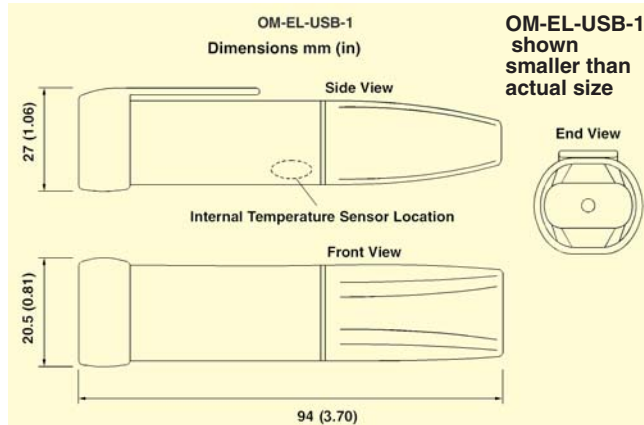
- ✓ Temperature, Temperature/RH/Dew Point, Voltage, and Current Models
- ✓ Data Logger Plugs Directly into Computer's USB Port for Easy Setup and Data Download (No USB Cable Required)
- ✓ User-Programmable Alarm Thresholds with LED Indicators
- ✓ Bright Red, Green, and Orange LED Indication
- ✓ Low-Battery Warning
- ✓ IP67 Protection

The OM-EL-USB Series of data loggers includes models for temperature, temperature/relative humidity, voltage, and current measurement. The user can easily set up the data logger and download the stored data by plugging the module into a PC's USB port and running the easy-to-use Windows software. Software-selectable setup parameters include logging rate, start time, high/low alarm settings, and temperature units (°C or °F). Data can then be graphed, printed, and exported to other applications such as Excel. Each data logger is supplied complete with a long-life lithium battery. Built-in LED indicators show data logger status. OM-EL-USB Series data loggers are protected against moisture to IP67 standards when the protective cap is fitted.

Specifications

OM-EL-USB-1 TEMPERATURE DATA LOGGER

Range: -35 to 80°C (-31 to 176°F)
Resolution: 0.5°C (1°F)
Accuracy: ±1.0°C (±2.0°F)



GENERAL

Memory: 16,000 temperature readings

Logging Interval: 10 sec to 12 h

Operating Temperature

Range: 35 to 80°C (-31 to 176°F)

Alarm Thresholds:

High/low alarm thresholds selectable in software

Start Date/Time:

Selectable in software

Status Indicators (LEDs):

Red, green and orange

Software:

Windows 98/2000/XP

Power:

½ "AA" 3.6 V lithium battery (included)

Battery Life:

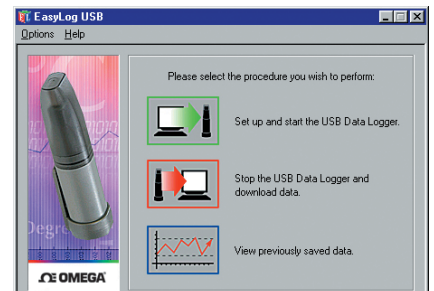
1 year (at 25°C and 1 minute logging interval)

Weight:

43 g (1.5 oz)

Dimensions:

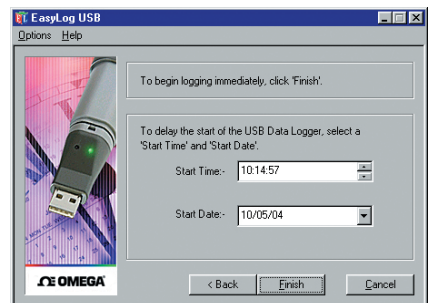
See dimensional drawing



Windows software—initial setup window

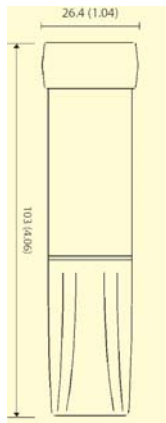


Windows software—alarm setup window



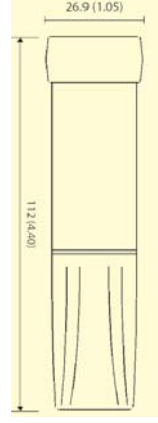
Windows software—logger start window

OM-EL-USB-2, shown smaller than actual size



OM-EL-USB-2
Dimensions: mm (in)

OM-EL-USB-3, shown smaller than actual size



OM-EL-USB-3, -4
Dimensions: mm (in)

OM-EL-USB-4, shown smaller than actual size



**OM-EL-USB-2
TEMPERATURE AND RELATIVE
HUMIDITY DATA LOGGER
(DEW POINT INDICATION VIA
WINDOWS SOFTWARE)
TEMPERATURE**

Range: -35 to 80°C (-31 to 176°F)
Resolution: 0.5°C (1°F)
Accuracy: ±1.0°C (±2.0°F)

HUMIDITY

Range: 0 to 100% RH
Resolution: 0.5% RH
Accuracy: 20 to 80% RH
±3.5% RH

DEW POINT

Accuracy (overall error in the calculated dew point for RH measurements from 40 to 100% RH @ 25°C): ±2°C (±4°F)

GENERAL

Memory: 16,000 temperature and 16,000 relative humidity readings
Logging Interval: 10 seconds to 12 hours
Operating Temperature Range: -35 to 80°C (-31 to 176°F)
Alarm Thresholds: High/low alarm thresholds for % RH and temperature, selectable in software
Start Date/Time: Selectable in software
Status Indicators (LEDs): Red and green
Software: Windows 98/2000/XP
Power: ½ "AA" 3.6 V lithium battery (included)
Battery Life: 1 year typical (depends on sample rate, ambient temperature and use of alarm LEDs)
Weight: 57 g (2 oz)
Dimensions: See dimensional drawing

**OM-EL-USB-3
VOLTAGE DATA LOGGER**

Range: 0 to 30 Vdc
Resolution: 100 mV
Accuracy: ±1%

GENERAL

Memory: 32,000 voltage readings
Logging Interval: 1 second to 12 hours
Input Connection: Screw terminals
Operating Temperature Range: -25 to 80°C (-13 to 176°F)
Alarm Thresholds: High/low alarm thresholds selectable in software
Start Date/Time: Selectable in software
Status Indicators (LEDs): Red and green
Power: ½ "AA" 3.6 V lithium battery (included)
Battery Life: 1 year typical (depends on sample rate, ambient temperature and use of alarm LEDs)
Weight: 57 g (2 oz)
Dimensions: See dimensional drawing

**OM-EL-USB-4
CURRENT DATA LOGGER**

Range: 4 to 20 mA
Resolution: 0.1 mA
Accuracy: ±1%

GENERAL

Memory: 32,000 current readings
Logging Interval: 1 second to 12 hours
Input Connection: Screw terminals
Operating Temperature Range: -35 to 80°C (-31 to 176°F)
Alarm Thresholds: High/low alarm thresholds selectable in software
Start Date/Time: Selectable in software
Status Indicators (LEDs): Red and green
Power: ½ "AA" 3.6 V lithium battery (included)
Battery Life: 1 year typical (depends on sample rate, ambient temperature and use of alarm LEDs)
Weight: 57 g (2 oz)
Dimensions: See dimensional drawing

ALL MODELS AVAILABLE FOR FAST DELIVERY!

To Order (Specify Model Number)		
Model No.	Price	Description
OM-EL-USB-1		Temperature data logger with USB interface
OM-EL-USB-2		Temperature/RH/dew point data logger with USB interface
OM-EL-USB-3		Voltage data logger with USB interface
OM-EL-USB-4		Current data logger with USB interface
OM-EL-BATT		Replacement 3.6 V lithium battery

Each data logger is supplied with Windows software on CD-ROM, operator's manual and 3.6 V lithium battery. Data logger plugs directly into computer's USB port (no USB cable required).

Ordering Example: OM-EL-USB-1, temperature data logger with USB interface,